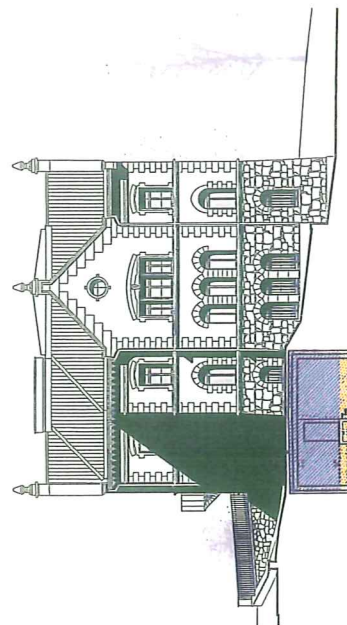
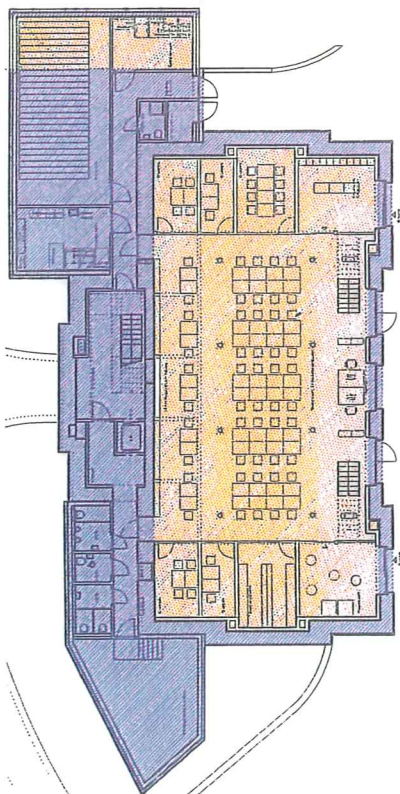
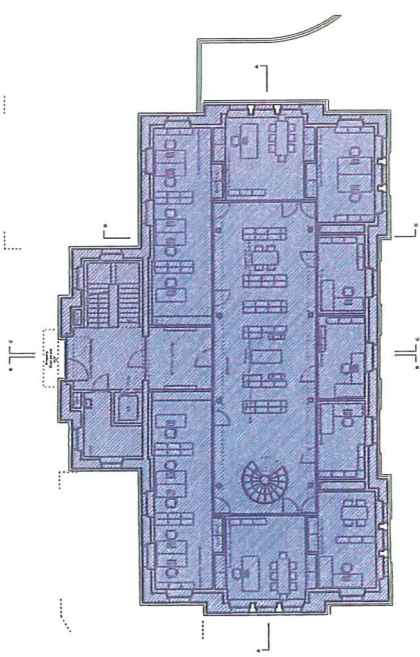
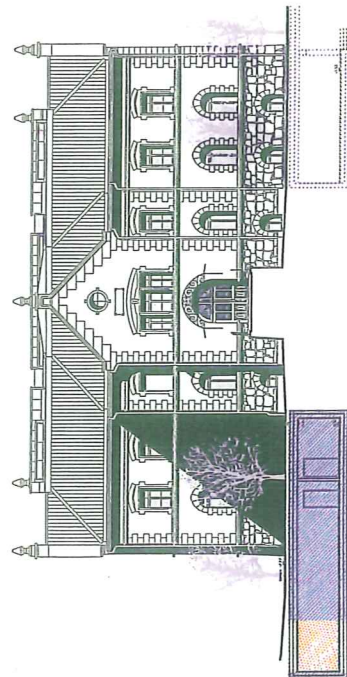
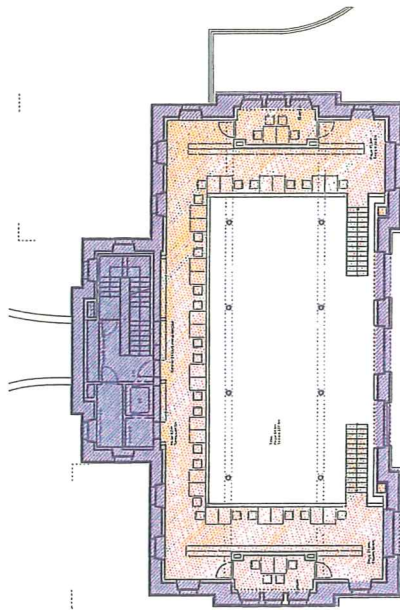
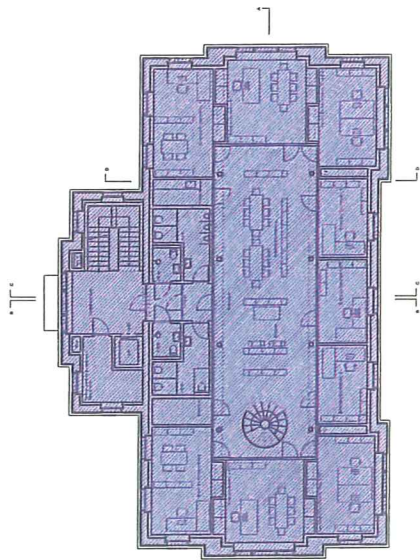
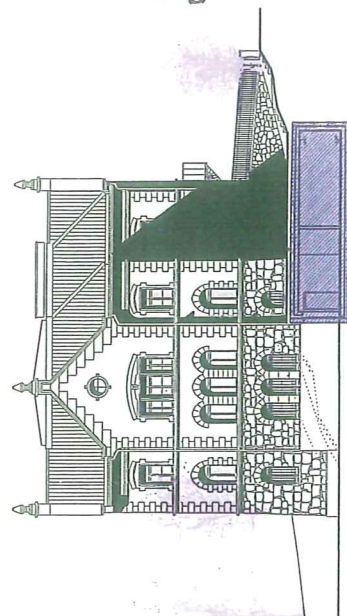
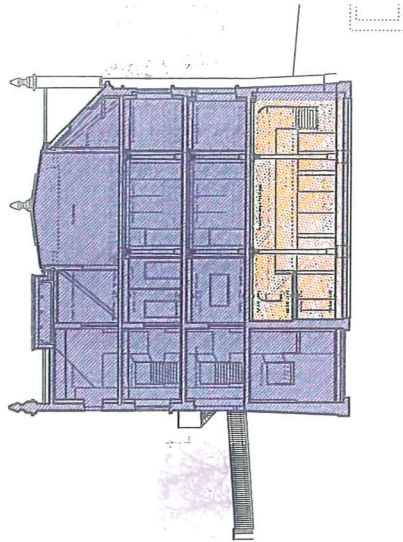
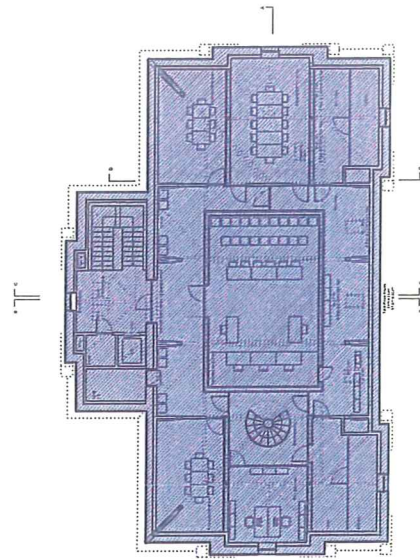


# Beilage 7



Teilprojekte  
 Basissprojekte  
 Studienbibliothek

Mit 1:300	Fachplaner:	Gesamplaner:	Bauherrschaft:	177 UZZ
Dat 23.09.2009	Bauing. WAM Partner, 3005 Bern	Grat Stampfli Jenni	Kanton Zug	Vorprojekt
For A3	Elektro BERING AG, 3000 Bern	Architekten AG	Baudirektion / Hochbauamt	SCHEMA
Verf GSJ	HLKS Reschli-Partner AG,	Weissensteinstr. 81	Abachstrasse 5	Abgrenzung
	3083 Ittigen	4500 Solothurn	Postfach 857	Teilprojekte
	Bauphys. MSJ Bauphysik + Akustik AG,	T 032 624 50 50	6300 Zug	
	3042 Kirchberg	F 041 728 54 00		
		www.grat-stampfli-jenni.ch		
		info@grat-stampfli-jenni.ch		