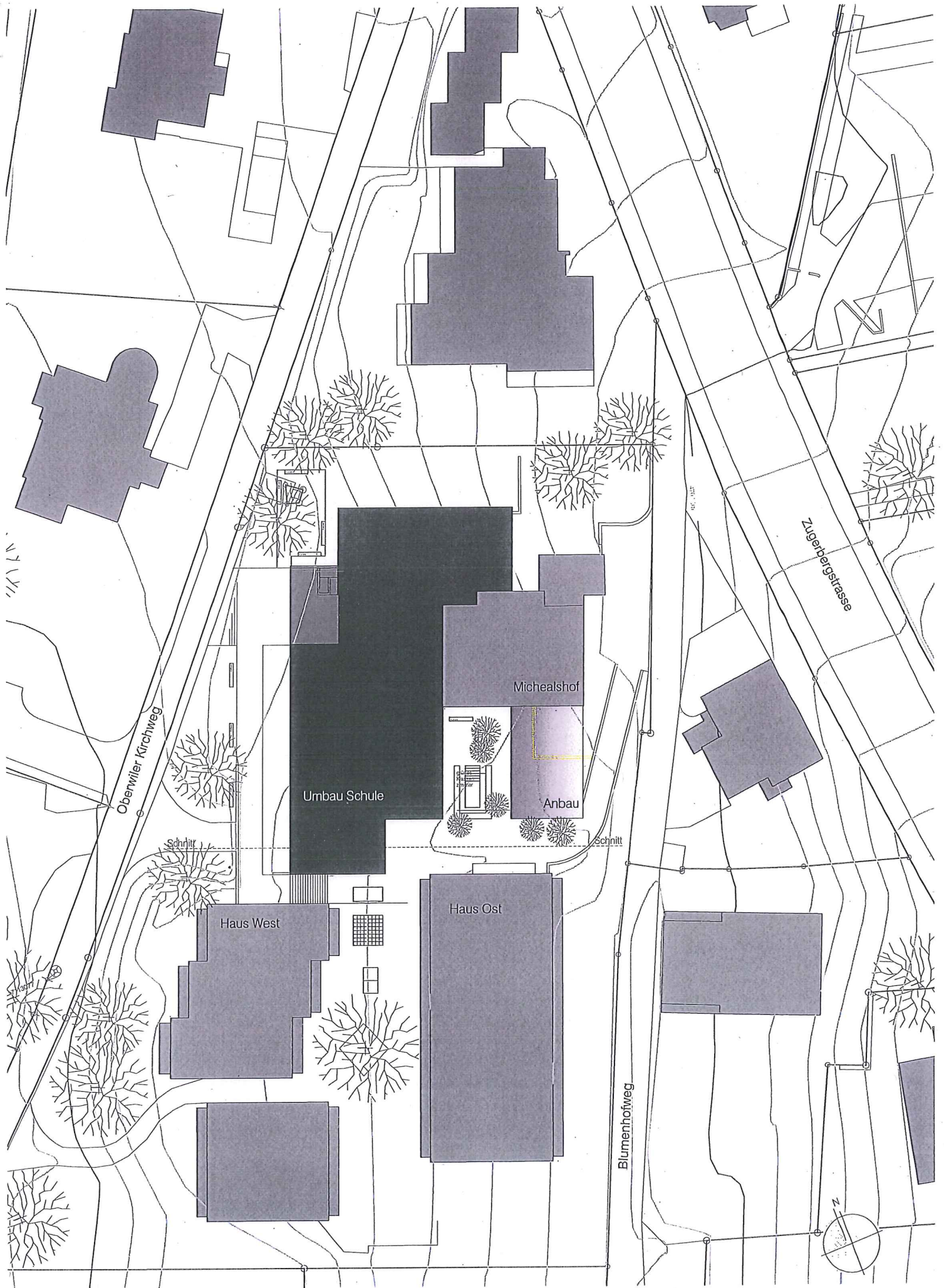


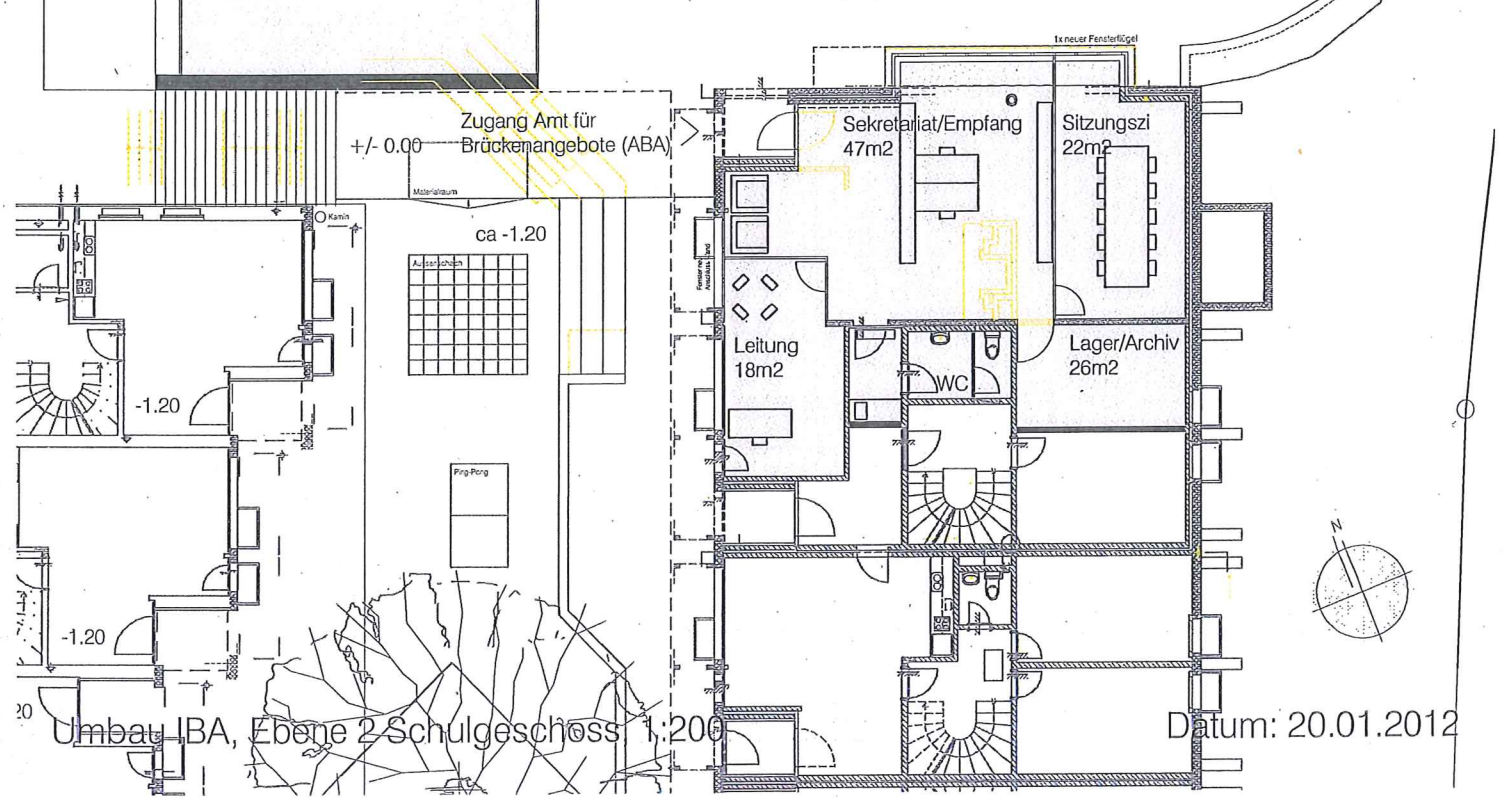
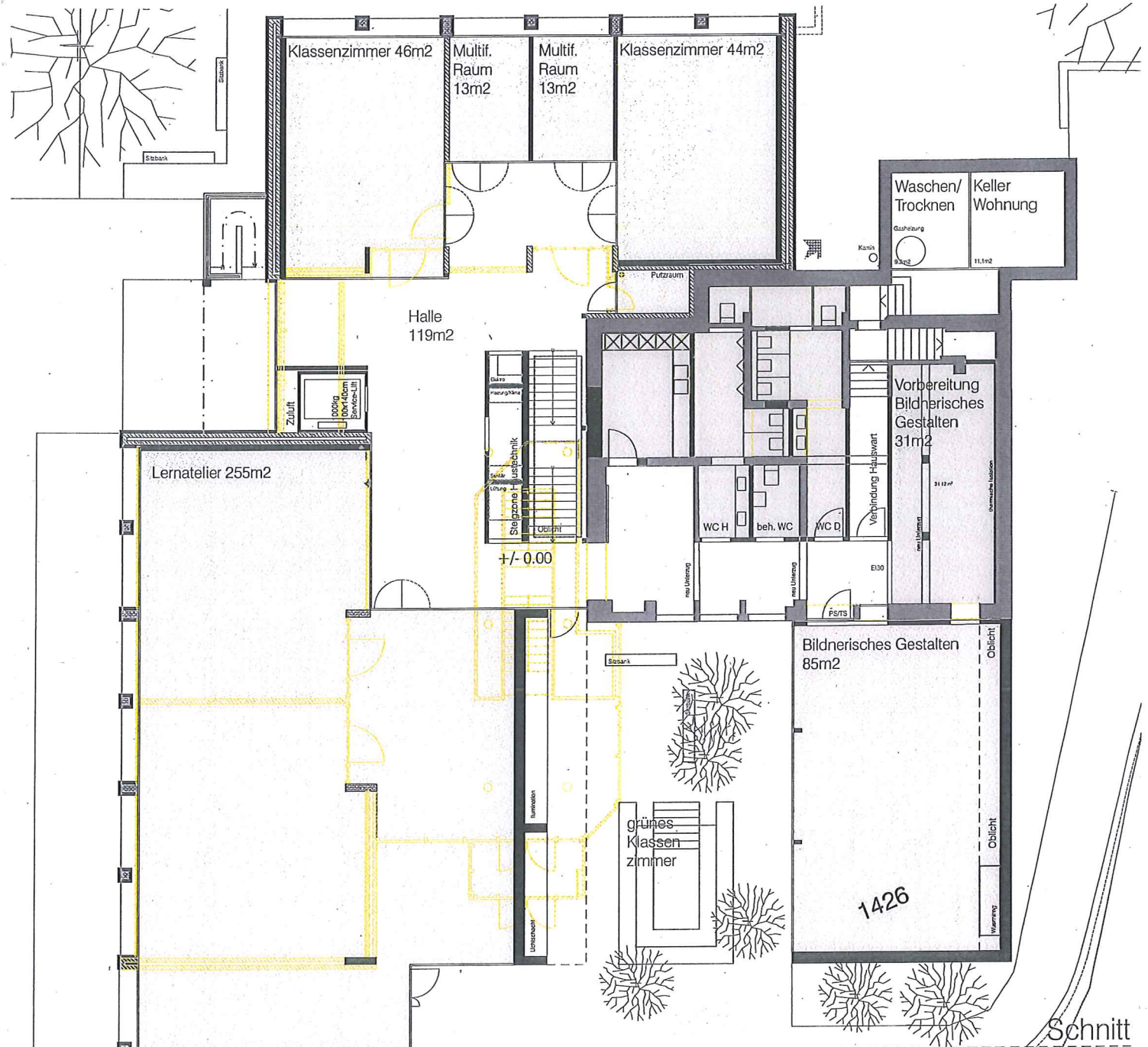
INTEGRATIONS - BRÜCKEN - ANGEBOT (I-B-A)

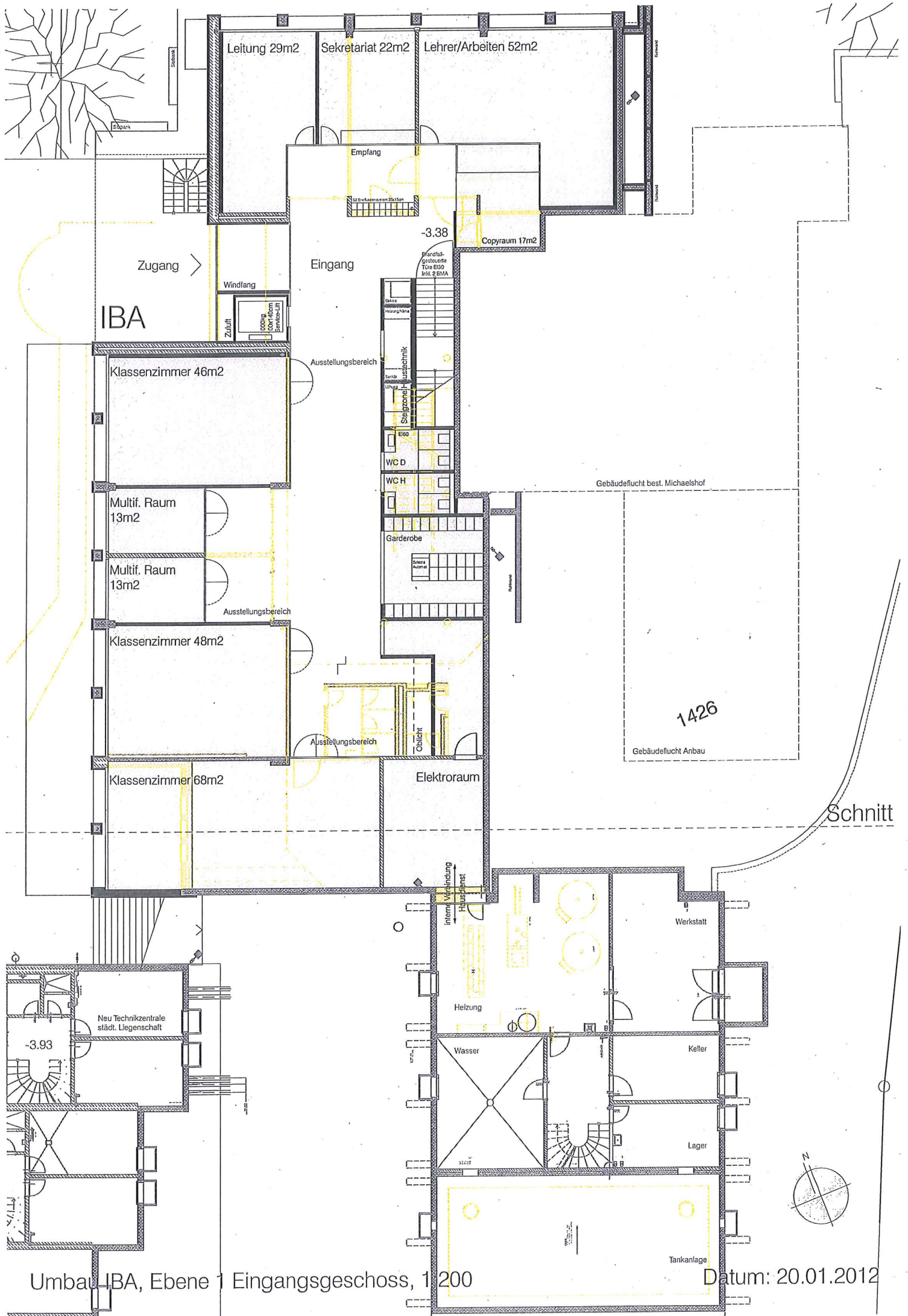
Zugerbergstrasse 22, Zug

1.1 Situationsplan

1.2 Grundrisse, Schnitt, Fassaden







Leitung 29m² Sekretariat 22m² Lehrer/Arbeiten 52m²

Empfang

-3.38

Copyraum 17m²

Zugang >

Eingang

IBA

Klassenzimmer 46m²

Ausstellungsbereich

Multif. Raum 13m²

Multif. Raum 13m²

Ausstellungsbereich

Klassenzimmer 48m²

Ausstellungsbereich

Klassenzimmer 68m²

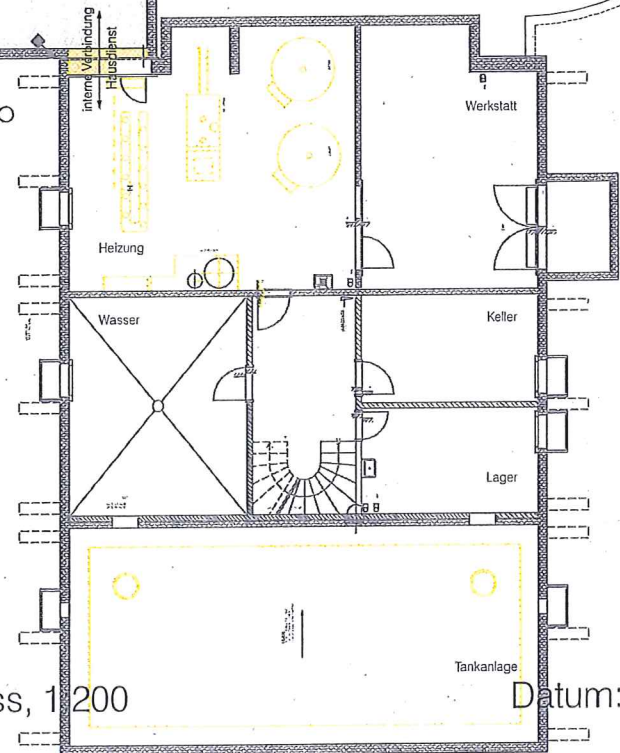
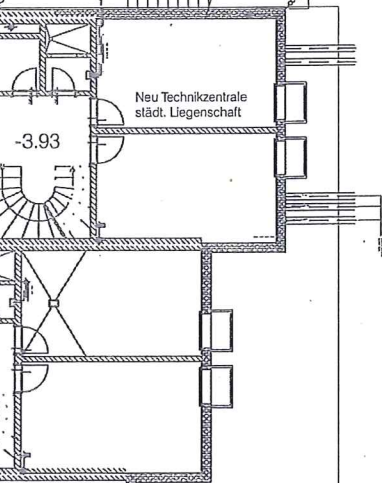
Elektorraum

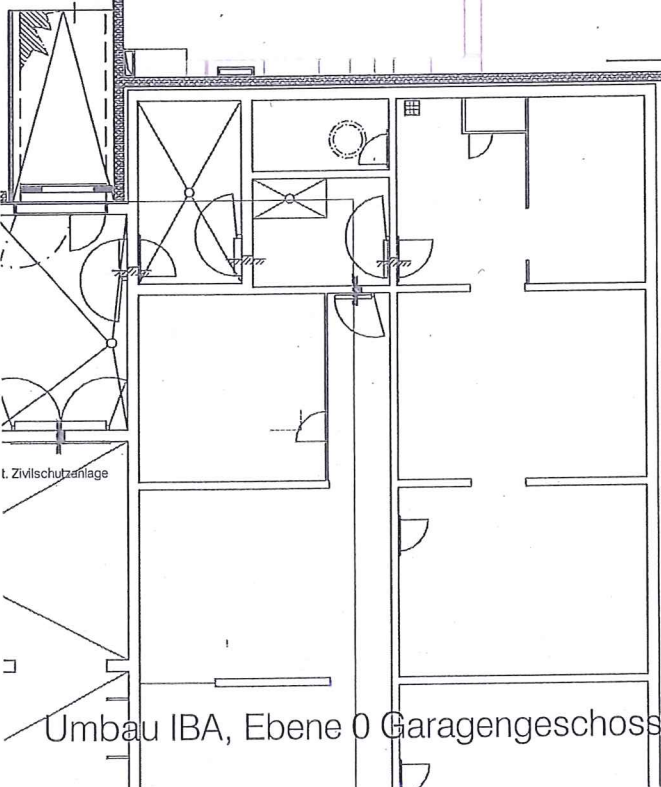
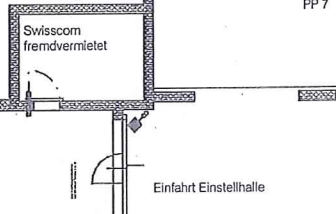
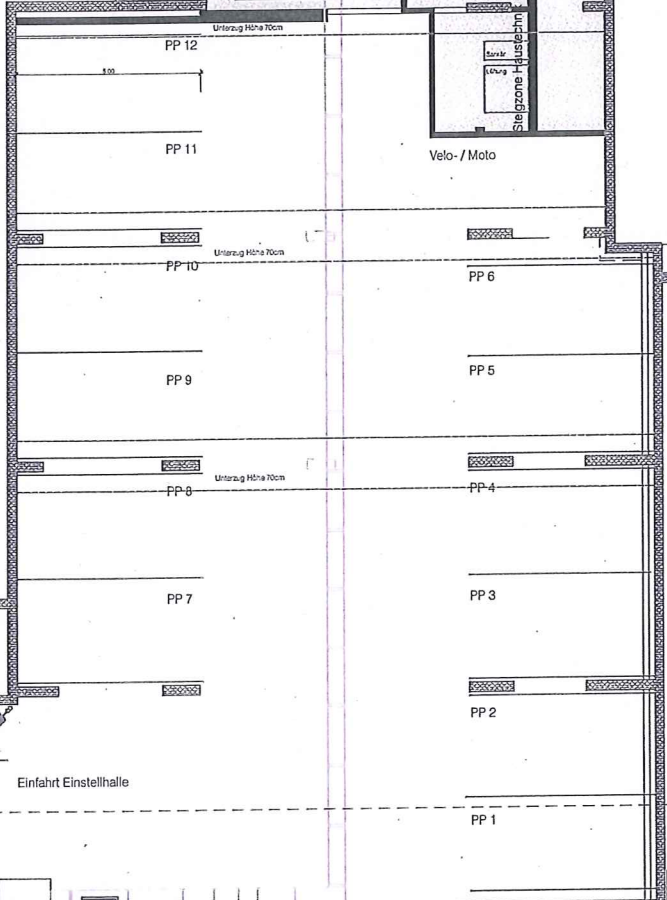
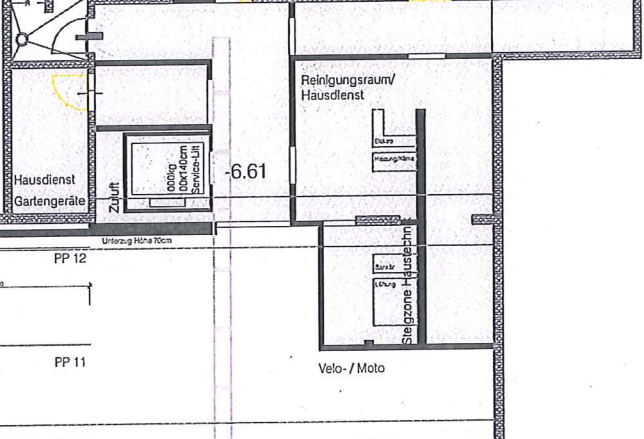
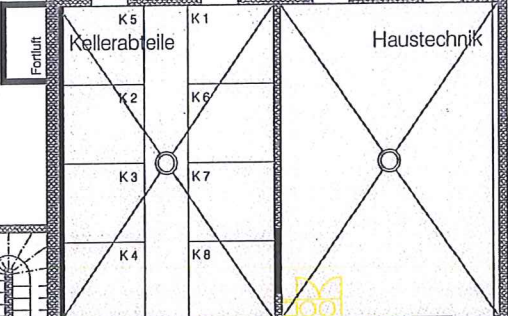
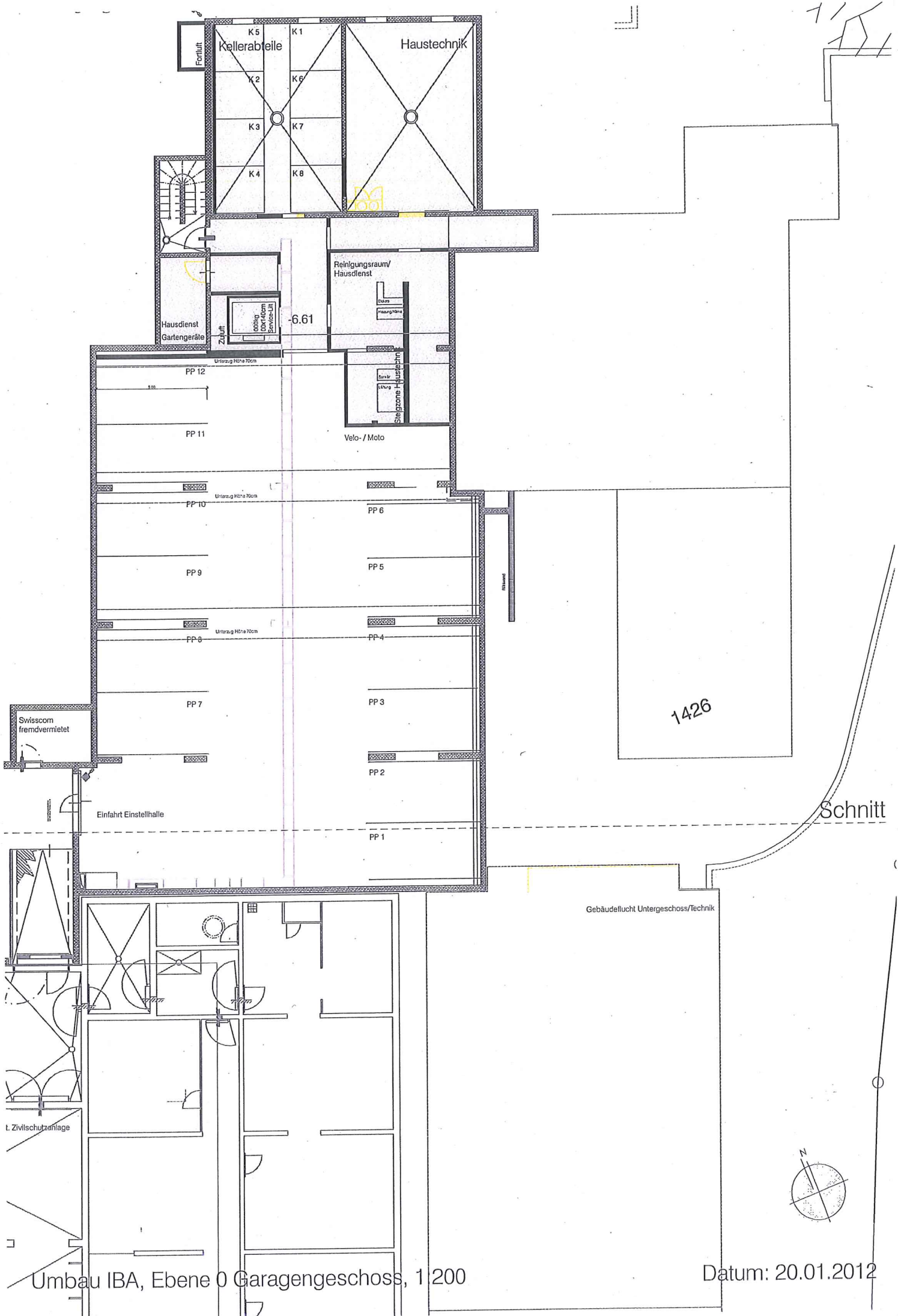
Gebäudeflucht best. Michaelshof

1426

Gebäudeflucht Anbau

Schnitt

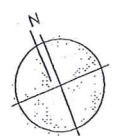


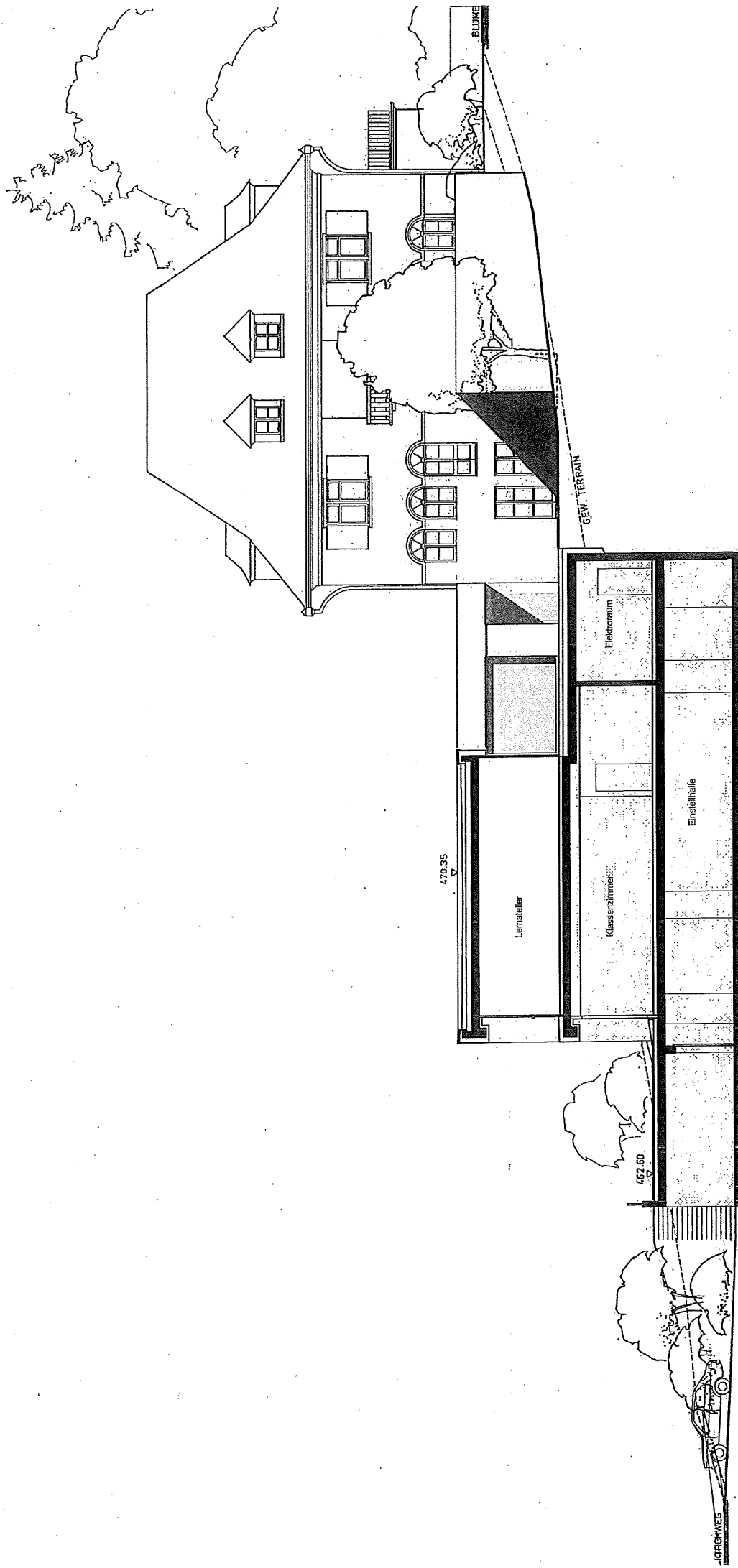


1426

Schnitt

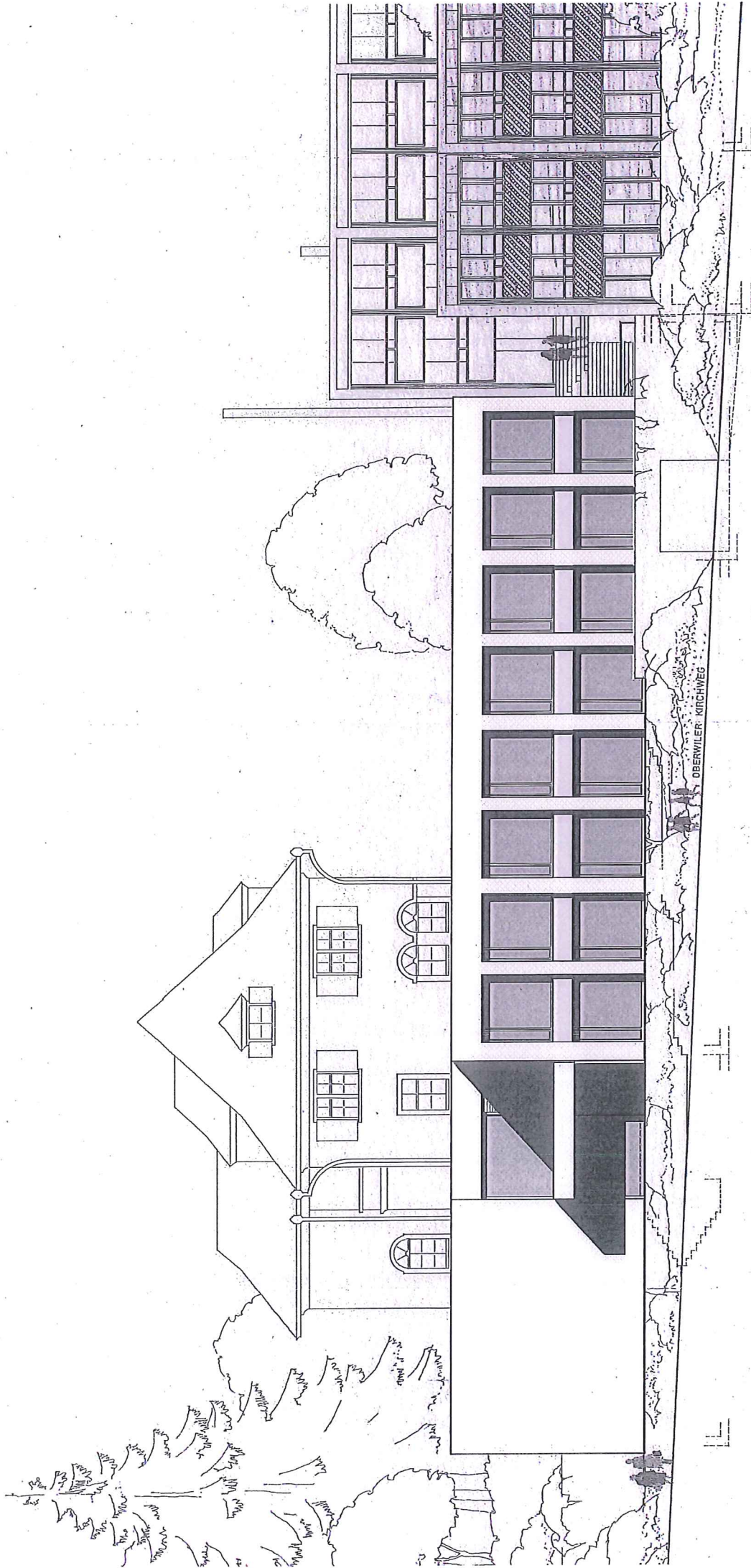
Gebäudeflucht Untergeschoss/Technik

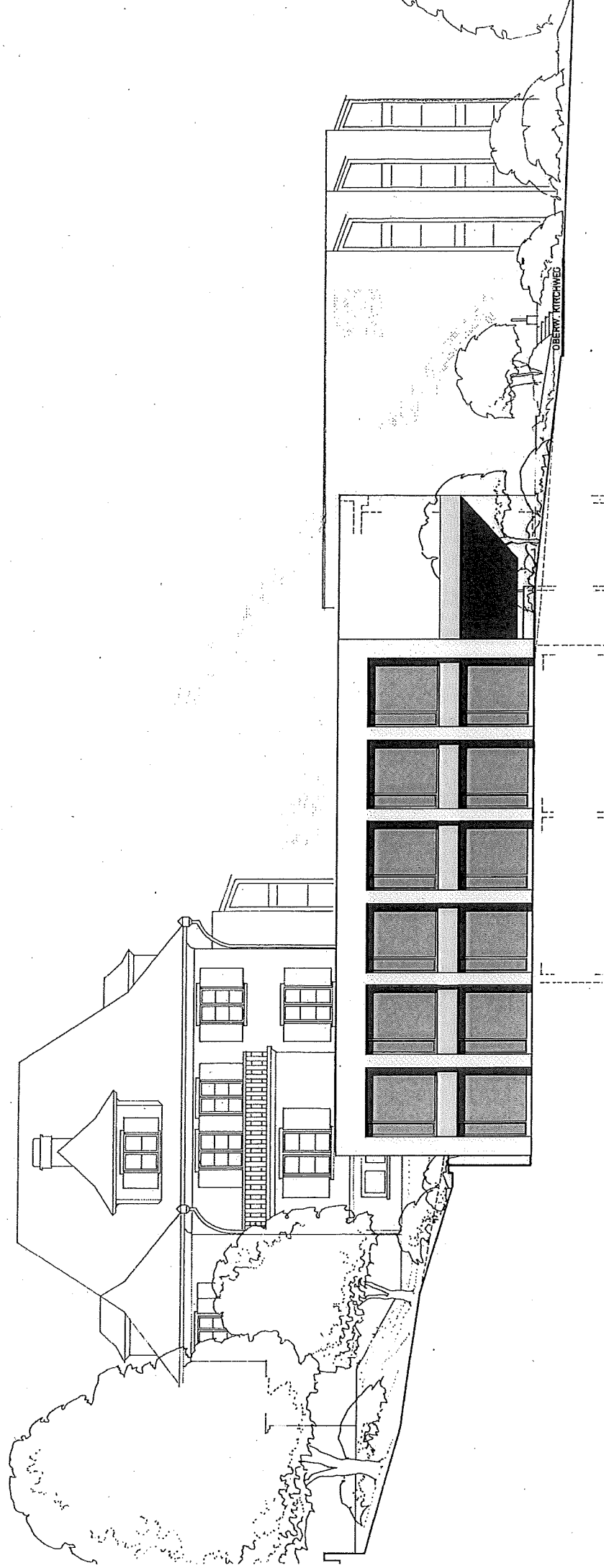




Datum: 20.01.2012

Umbau IBA, Ansicht Sued / Schnitt, 1:200





Umbau IBA, Ansicht Nord, 1:200

Datum: 20.01.2012